

Technology Development
 Pilgrim 5, Suite 5
 5 Pilgrim Park Road
 Waterbury, VT 05676

Phone: 802.244.1457
 Fax: 802.244.1462
 Email: preflight@dartmouthjournals.com

Adobe Pagemaker PDF Creation Guide

DJS_AdobePagemaker2.0: version 2.0; May 9, 2007; Web release



version 0.1	December 9, 2003	Draft; KL
version 0.2	December 10, 2003	Draft; after Preflight comments, AB
version 1.0	December 11, 2003	Initial Release; KL
version 1.1	March 26, 2004	Revision; comp-2-print, KL
version 1.2	April 26, 2004	Revision; after IT comments, SW
version 2.0b	April 7, 2007	Pre-web release, KL
version 2.0	May 9, 2007	Web release; after TechDev comments, SW

Contents

1. Introduction	1
2. Supported Versions	1
3. PS/PDF Creation Process	1
4. Prinergy Refiner PPD	1
5. Printer Style Creation	1
5.1. Screenshot Tutorial	1
5.1.1. Defining a Printer Style	2
5.1.2. Document Tab	2
5.1.3. Paper Tab	3
5.1.3.1. Custom Paper Size Window	3
5.1.4. Options Tab	3
5.1.5. Color Tab	4
5.1.6. Features Tab	4
6. Printing PostScript Files	5
6.1. Document Setup	5
7. Summary	6
8. Implementation Date	6
9. Feedback	6

1. Introduction

This document is intended as a reference guide for PostScript/PDF file creation using Adobe Pagemaker. Following these parameters will assist in producing PDF files which process efficiently and print as intended. Consult the *Configuring a Workstation for PS/PDF Generation* document for important setup information.

We will update this document as necessary to accommodate emerging technologies and software revisions.

2. Supported Versions

Adobe Pagemaker 6.x-7.x are supported.

3. PS/PDF Creation Process

The process of writing PostScript files for distillation-to-PDF should be used for Adobe Pagemaker. By configuring a *Printer Style*, many page and printer parameters can easily be recalled each time PostScript files need to be written.

4. Prinergy Refiner

The newest Adobe Universal Printer Driver should be downloaded from Adobe's website and configured to use the Prinergy Refiner PPD. Please consult the *Configuring a Workstation for PS/PDF Generation* document for PPD placement details.

5. Printer Style Creation

5.1. Screenshot Tutorial

Please use the following guidelines for setting application criteria. These screenshots were captured from Adobe Pagemaker 7.x. They also provide a source of baseline criteria for previous versions.

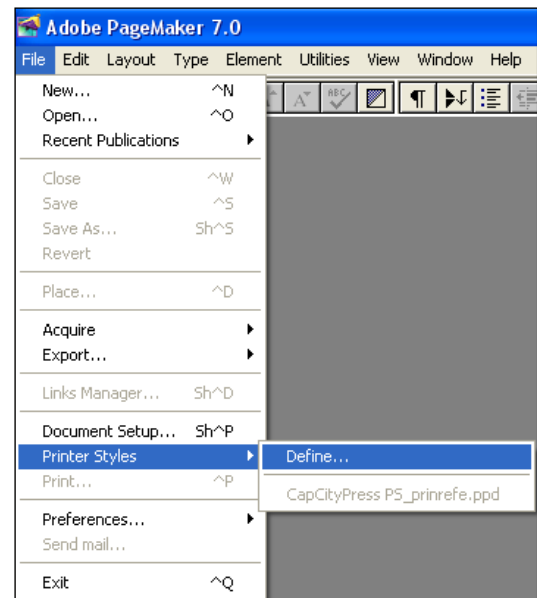


fig. 1

5.1.1. Defining a Printer Style (figs. 1, 2)

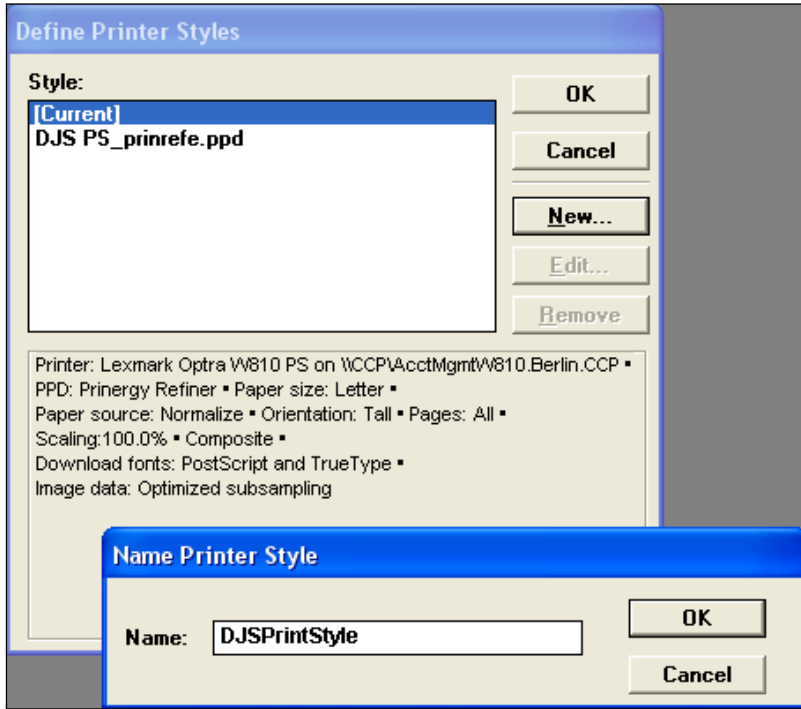


fig. 2

- Select *File/Printer Styles/Define* (fig. 1)
 - Select *New* button
 - Name Printer Style (suggested *DJSprintStyle*)
 - Select *OK* button
- Note: Name will appear in list.
- Highlight and select *Edit* button

5.1.2. Document Tab

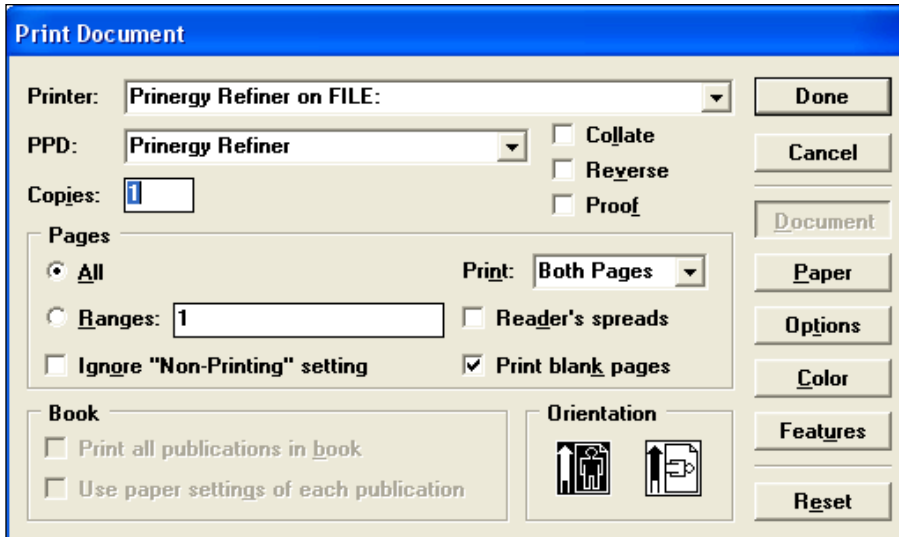


fig. 3

- Select *Postscript Printer*
- Note: Printer field on Mac version will show printer currently selected in Chooser.
- Select *PPD*
- Note: If using Windows OS, the Prinergy Refiner PPD file must be placed in the directory below. It will then be available for selection in the PPD drop-down menu.
 C:\Program Files\Adobe\Pagemaker x.x\RSRC\USEENGLISH\ppd4\
- Select *Document* button
 - Set criteria according to window

5.1.3. Paper Tab (fig. 4)

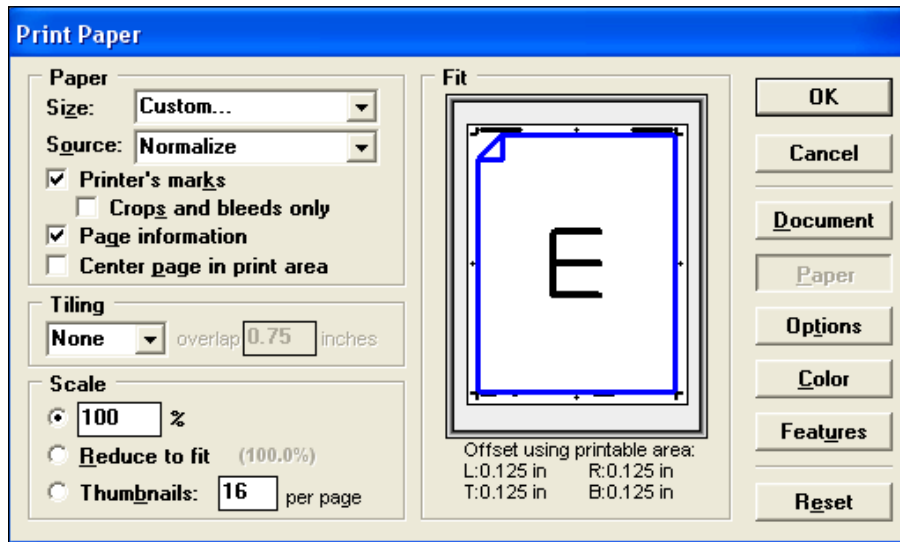


fig. 4

- Select *Paper* button
- Select Size: *Custom...*

5.1.3.1. Custom Paper Size Window (fig. 5)

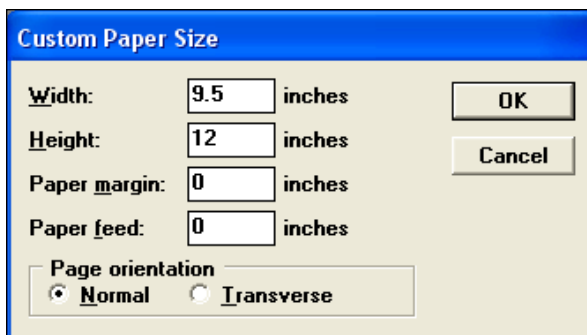


fig. 5

Custom paper size dimensions should be input as 1" larger than document size dimensions. This will oversize PDFs, allowing for page marks and bleeds to display on all sides.

- Select *OK*

5.1.4. Options Tab (fig. 6)

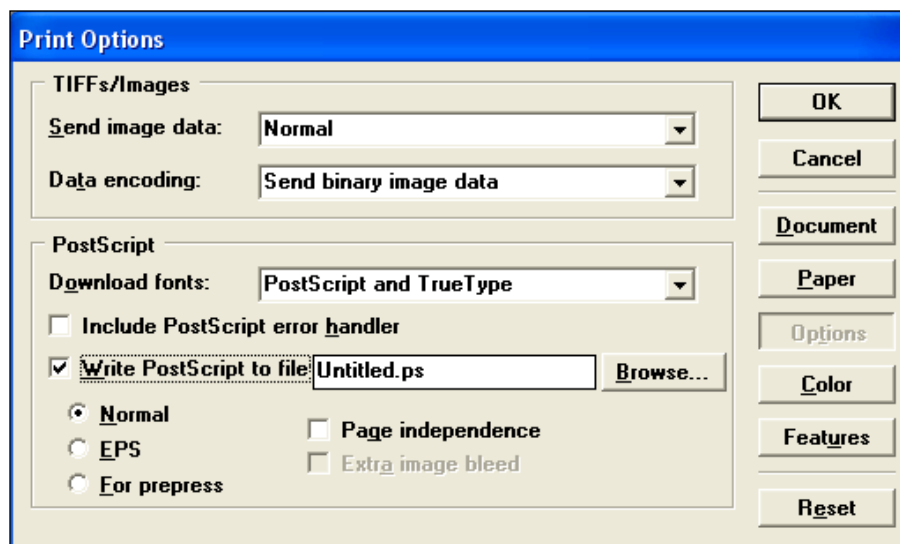


fig. 6

- Select *Options* button
- Select Size: *Custom...*
- Set criteria according to window

5.1.5. Color Tab (fig. 7)

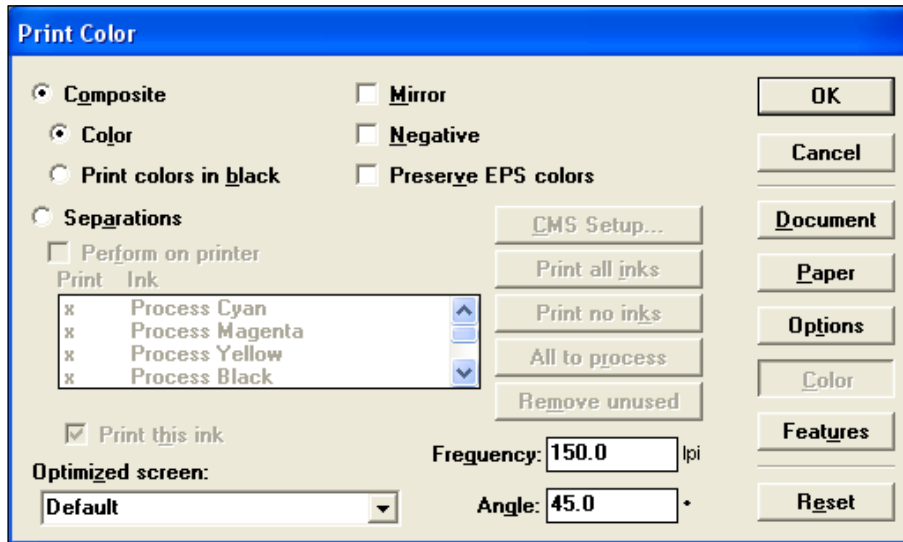


fig. 7

- Select *Color* button
- Set criteria according to window

5.1.6. Features Tab (fig. 8)

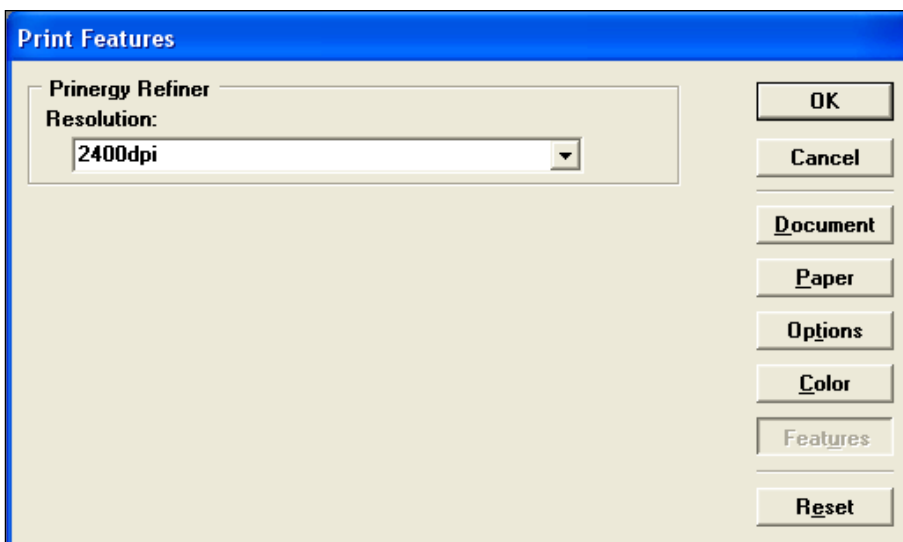


fig. 8

- Select *Features* button
- Set criteria according to window
- Select *OK* to exit Define Printer Styles window

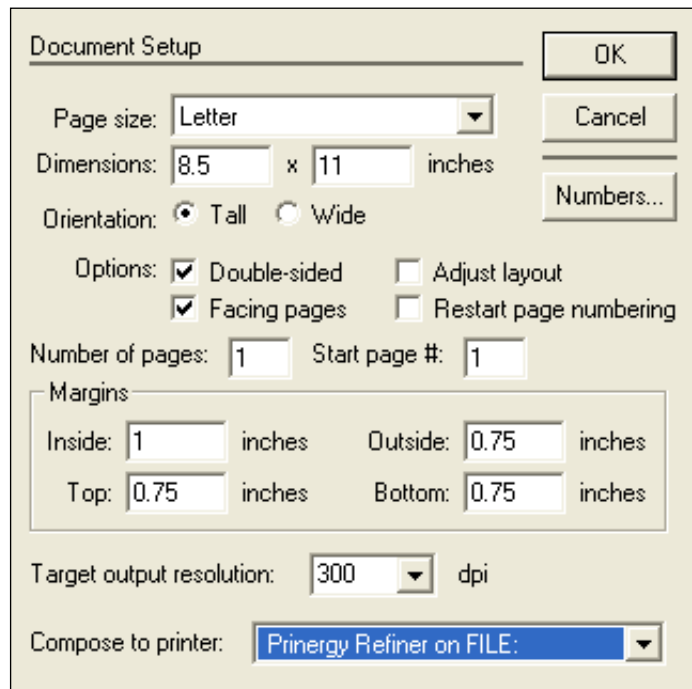
6. Printing PostScript Files (fig. 9)



- Open a document
- Select *File/Document Setup...*

fig. 9

6.1. Document Setup (fig. 10)



Document size dimensions should be input as trim size of book. Objects intended to bleed should cross document boundary into paste-board area. Page marks and bleeds will display in PDF when page dimensions (p.3, fig. 5) are oversized by 1".

- Select Target output resolution: *2400 dpi*
- Select Compose to printer:
Prinergy Refiner on FILE: (PC version)

Notes: Margins displayed are examples only. The finished margins for your title should be inserted here.

Changing the *Compose to printer*: setting after a document has already been created may result in text reflow. **Ideally, this criteria should be set prior to document creation.**

fig. 10

7. Summary

When ready to print a document as a PostScript file, the Printer Style can be directly selected (no need to enter the *Define* menu again). A properly configured Adobe Pagemaker Printer Style, in combination with correct PostScript printer setup and Adobe Distiller Joboptions, will assist in producing PDFs which process well and preserve graphics/text quality. Please consult the *Configuring a Workstation for PostScript/PDF Generation* document to verify the PostScript printer has been correctly configured according to your OS.

8. Implementation Date

Please implement these settings after May 9, 2007.

9. Feedback

Technology Development encourages your feedback to ensure this documentation is as clear and accurate as possible. Please contact us via email at preflight@dartmouthjournals.com with comments.